

#16



**COMPLETE**

**Collector:** Web Link 3 (Web Link)

**Started:** Wednesday, May 27, 2015 3:20:54 PM

**Last Modified:** Wednesday, May 27, 2015 3:25:29 PM

**Time Spent:** 00:04:34

**IP Address:** 50.199.223.153

**PAGE 1: Welcome**

**Q1: Name**

First name, last name initial

Rich C

**PAGE 2: Which of the following do you do in your position?**

**Q2: Do you participate in decisions about purchasing equipment for your data center (e.g., servers, software, racks, lighting, cooling equipment)?**

Yes

**Q3: Do you participate in decisions about servicing or maintaining equipment for your data center?**

Yes

**Q4: How many data centers, server rooms, and server closets does your company own or operate?**

6

**Q5: [If more than one data center] For how many data centers are you involved in major equipment purchase and maintenance decisions?**

6

**PAGE 3**

**Q6: The majority of the data centers you help manage are:**

Localized data centers (500 – 5,000 square feet)

**Q7: What is the average number of racks in your typical data center?**

<2,000 (please enter the value below) 20

**Q8: How many servers are there in your organization as a whole?**

< 2,000

**PAGE 4**

Questionnaire for focus group participants at AFCOM Symposium Boston event on June 2nd

<b>Q9: What type of data centers does your company operate?</b>	Server rooms or closets, Enterprise/corporate data centers
<b>Q10: Which sectors does your data center support? (Name no more than three)</b>	Media and telecommunications
<b>Q11: What state(s) are your data centers located in?</b>	NH, NC, CA, _ international

PAGE 5

<b>Q12: When did you last pursue a major equipment purchase/upgrade for your data center?</b>	Within the last 3 years
<b>Q13: How often do you replace servers in your data centers?</b>	3-4 years
<b>Q14: How often do you make major infrastructure upgrades to your data centers?</b>	annually
<b>Q15: Do you actively participate in the EnergySTAR Buildings, Green Grid, or another third-party energy-efficiency program?</b>	No
<b>Q16: Have you had an energy audit performed by a third party within the last three years?</b>	No

PAGE 6

<b>Q17: Do you track energy use on a regular basis?</b>	No
<b>Q18: If YES, what is the typical electricity consumption (kwh) of one of your data centers?</b>	<i>Respondent skipped this question</i>
<b>Q19: Do you track power usage effectiveness (PUE) or any other efficiency measures?</b>	No
<b>Q20: If YES, what is the average PUE of your data centers?</b>	<i>Respondent skipped this question</i>
<b>Q21: Do you track server utilization?</b>	No
<b>Q22: If YES, what is the average server utilization rate of your data centers?</b>	<i>Respondent skipped this question</i>

PAGE 7

<b>Q23: Do you rent data center space from another company?</b>	No
<b>Q24: If YES, what percentage of your data center needs are met by renting space from others?</b>	<i>Respondent skipped this question</i>
<b>Q25: Do you lease or outsource from another company any of the following elements of your data centers?</b>	
Servers	No
Facility management	Sometimes
Maintenance & repairs	Sometimes

PAGE 8

<b>Q26: Do you lease space in your data center(s) to other companies?</b>	No
<b>Q27: If YES, what percentage of your racks are leased to other companies?</b>	<i>Respondent skipped this question</i>
<b>Q28: If you lease data center space to or from another company, does the tenant or facility owner typically pay for electricity costs?</b>	NA

PAGE 9: Facility Management

**Q29: Regarding Facility Management; has your company considered or used any of the following technologies and energy saving strategies: (check all that apply)**

Isolating hot/cold aisles	NEVER USED; Would consider using in the future
Blanking panels	NEVER USED; Would consider using in the future
Enclose server racks (e.g., strip curtains)	NEVER USED; Would consider using in the future
Data center infrastructure management (DCIM) software	HAS USED; Would use again
Raising temperature set points	HAS USED; Would use again
Variable speed fan drives	HAS USED; Would use again
Energy-efficient air handling units	NEVER USED; Would consider using in the future
Modular facility design for data center expansion	NEVER USED; Would consider using in the future
Air-side economizer	HAS USED; Would use again
Water-side economizer	NEVER USED; Would consider using in the future
Energy-efficiency lighting	HAS USED; Would use again
Predictive modeling of future IT deployments	NEVER USED; Would consider using in the future

---

**Q30: What is the typical facility temperature?** 75

**Q31: Regarding Servers; Has your company considered or used any of the following technologies and energy saving strategies: (check all that apply)**

Energy efficient server hardware (e.g., power supply, fans, etc.)	HAS USED;Would use again
Underclocking	NEVER USED;Would consider using in the future
Virtualization	HAS USED;Would use again
Decomission idle servers	HAS USED;Would use again
Consolidate lightly used servers	HAS USED;Would use again
Improve data storage efficiently	HAS USED;Would use again
IT power management software	NEVER USED;Would consider using in the future

**PAGE 11: [Multi-tenant DCs] Adjust pricing models to incentivize energy efficiency**

**Q32: Regarding [Multi-tenant data centers] Adjust pricing models to incentivize energy efficiency; Has your company considered or used any of the following technologies and energy saving strategies: (check all that apply)**

Space-based pricing	HAS USED; Would use again
Space and power block pricing (differentiate power and energy)	NEVER USED;Would consider using in the future
Space and actual power pricing (differentiate power and energy)	NEVER USED;Would consider using in the future

#17



**COMPLETE**

**Collector:** Web Link 3 (Web Link)

**Started:** Thursday, May 28, 2015 12:38:28 PM

**Last Modified:** Thursday, May 28, 2015 12:55:57 PM

**Time Spent:** 00:17:29

**IP Address:** 204.61.205.150

**PAGE 1: Welcome**

**Q1: Name**

First name, last name initial

Gary D

**PAGE 2: Which of the following do you do in your position?**

**Q2: Do you participate in decisions about purchasing equipment for your data center (e.g., servers, software, racks, lighting, cooling equipment)?**

Yes

**Q3: Do you participate in decisions about servicing or maintaining equipment for your data center?**

Yes

**Q4: How many data centers, server rooms, and server closets does your company own or operate?**

5

**Q5: [If more than one data center] For how many data centers are you involved in major equipment purchase and maintenance decisions?**

3

**PAGE 3**

**Q6: The majority of the data centers you help manage are:**

Localized data centers (500 – 5,000 square feet)

**Q7: What is the average number of racks in your typical data center?**

<2,000 (please enter the value below) 40

**Q8: How many servers are there in your organization as a whole?**

< 2,000

**PAGE 4**

Questionnaire for focus group participants at AFCOM Symposium Boston event on June 2nd

<b>Q9: What type of data centers does your company operate?</b>	Server rooms or closets, Enterprise/corporate data centers
<b>Q10: Which sectors does your data center support? (Name no more than three)</b>	Other (please specify) Manufacturing
<b>Q11: What state(s) are your data centers located in?</b>	Maine, Massachusetts, Minnesota

PAGE 5

<b>Q12: When did you last pursue a major equipment purchase/upgrade for your data center?</b>	Within the last 3 years
<b>Q13: How often do you replace servers in your data centers?</b>	3 year refresh rate
<b>Q14: How often do you make major infrastructure upgrades to your data centers?</b>	+/- every 3 years
<b>Q15: Do you actively participate in the EnergySTAR Buildings, Green Grid, or another third-party energy-efficiency program?</b>	No
<b>Q16: Have you had an energy audit performed by a third party within the last three years?</b>	No

PAGE 6

<b>Q17: Do you track energy use on a regular basis?</b>	Yes
<b>Q18: If YES, what is the typical electricity consumption (kwh) of one of your data centers?</b>	51K kWh/mth - 12 month average
<b>Q19: Do you track power usage effectiveness (PUE) or any other efficiency measures?</b>	Yes
<b>Q20: If YES, what is the average PUE of your data centers?</b>	1,47 annualized - Corporate Data Center
<b>Q21: Do you track server utilization?</b>	No
<b>Q22: If YES, what is the average server utilization rate of your data centers?</b>	<i>Respondent skipped this question</i>

PAGE 7

<b>Q23: Do you rent data center space from another company?</b>	No
<b>Q24: If YES, what percentage of your data center needs are met by renting space from others?</b>	<i>Respondent skipped this question</i>
<b>Q25: Do you lease or outsource from another company any of the following elements of your data centers?</b>	
Servers	No
Facility management	No
Maintenance & repairs	Yes

PAGE 8

<b>Q26: Do you lease space in your data center(s) to other companies?</b>	No
<b>Q27: If YES, what percentage of your racks are leased to other companies?</b>	<i>Respondent skipped this question</i>
<b>Q28: If you lease data center space to or from another company, does the tenant or facility owner typically pay for electricity costs?</b>	<i>Respondent skipped this question</i>

PAGE 9: Facility Management



**Q29: Regarding Facility Management; has your company considered or used any of the following technologies and energy saving strategies: (check all that apply)**

Isolating hot/cold aisles	NEVER USED; Would consider using in the future
Blanking panels	HAS USED; Would use again
Enclose server racks (e.g., strip curtains)	HAS USED; Would use again
Data center infrastructure management (DCIM) software	HAS USED; Would use again
Raising temperature set points	HAS USED; Would use again
Variable speed fan drives	NEVER USED; Would consider using in the future
Energy-efficient air handling units	NEVER USED; Would consider using in the future
Modular facility design for data center expansion	NEVER USED; Would consider using in the future
Air-side economizer	NEVER USED; Would consider using in the future
Water-side economizer	NEVER USED; Would consider using in the future
Energy-efficiency lighting	HAS USED; Would use again
Predictive modeling of future IT deployments	NEVER USED; Would not consider
Other (please specify)	Our 'DCIM' is a Building Management System modified to meet our requirements. Note: #30 Below: +/-90D - Hot Aisle / +/-80 Cold Aisle

---

**Q30: What is the typical facility temperature?** 80

**Q31: Regarding Servers; Has your company considered or used any of the following technologies and energy saving strategies: (check all that apply)**

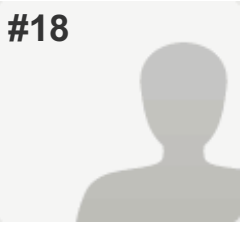
Energy efficient server hardware (e.g., power supply, fans, etc.)	HAS USED;Would use again
Underclocking	DON'T KNOW
Virtualization	HAS USED;Would use again
Decomission idle servers	HAS USED;Would use again
Consolidate lightly used servers	HAS USED;Would use again
Improve data storage efficiently	HAS USED;Would use again
IT power management software	DON'T KNOW

**PAGE 11: [Multi-tenant DCs] Adjust pricing models to incentivize energy efficiency**

**Q32: Regarding [Multi-tenant data centers] Adjust pricing models to incentivize energy efficiency; Has your company considered or used any of the following technologies and energy saving strategies: (check all that apply)**

*Respondent skipped this question*

#18



**COMPLETE**

**Collector:** Web Link 3 (Web Link)  
**Started:** Thursday, May 28, 2015 8:03:31 PM  
**Last Modified:** Thursday, May 28, 2015 8:23:35 PM  
**Time Spent:** 00:20:03  
**IP Address:** 207.96.47.16

PAGE 1: Welcome

**Q1: Name**

First name, last name initial

Mike O

PAGE 2: Which of the following do you do in your position?

**Q2: Do you participate in decisions about purchasing equipment for your data center (e.g., servers, software, racks, lighting, cooling equipment)?** Yes

**Q3: Do you participate in decisions about servicing or maintaining equipment for your data center?** Yes

**Q4: How many data centers, server rooms, and server closets does your company own or operate?** 4

**Q5: [If more than one data center] For how many data centers are you involved in major equipment purchase and maintenance decisions?** 1

PAGE 3

**Q6: The majority of the data centers you help manage are:** Localized data centers (500 – 5,000 square feet)

**Q7: What is the average number of racks in your typical data center?** <2,000 (please enter the value below) 15

**Q8: How many servers are there in your organization as a whole?** < 2,000

PAGE 4

Questionnaire for focus group participants at AFCOM Symposium Boston event on June 2nd

<b>Q9: What type of data centers does your company operate?</b>	Multi-tenant/colocation data centers
<b>Q10: Which sectors does your data center support? (Name no more than three)</b>	Co-location/shared
<b>Q11: What state(s) are your data centers located in?</b>	massachusetts

PAGE 5

<b>Q12: When did you last pursue a major equipment purchase/upgrade for your data center?</b>	Within the last 3 years
<b>Q13: How often do you replace servers in your data centers?</b>	3 to 5 years
<b>Q14: How often do you make major infrastructure upgrades to your data centers?</b>	3 years referring to storage and mainframe not cooling and power distribution equipment
<b>Q15: Do you actively participate in the EnergySTAR Buildings, Green Grid, or another third-party energy-efficiency program?</b>	No
<b>Q16: Have you had an energy audit performed by a third party within the last three years?</b>	No

PAGE 6

<b>Q17: Do you track energy use on a regular basis?</b>	Yes
<b>Q18: If YES, what is the typical electricity consumption (kwh) of one of your data centers?</b>	42000 kWh
<b>Q19: Do you track power usage effectiveness (PUE) or any other efficiency measures?</b>	Yes
<b>Q20: If YES, what is the average PUE of your data centers?</b>	1.9
<b>Q21: Do you track server utilization?</b>	No
<b>Q22: If YES, what is the average server utilization rate of your data centers?</b>	<i>Respondent skipped this question</i>

PAGE 7

<b>Q23: Do you rent data center space from another company?</b>	Yes
<b>Q24: If YES, what percentage of your data center needs are met by renting space from others?</b>	99
<b>Q25: Do you lease or outsource from another company any of the following elements of your data centers?</b>	
Servers	No
Facility management	Yes
Maintenance & repairs	Yes

PAGE 8

<b>Q26: Do you lease space in your data center(s) to other companies?</b>	No
<b>Q27: If YES, what percentage of your racks are leased to other companies?</b>	<i>Respondent skipped this question</i>
<b>Q28: If you lease data center space to or from another company, does the tenant or facility owner typically pay for electricity costs?</b>	no

PAGE 9: Facility Management

**Q29: Regarding Facility Management; has your company considered or used any of the following technologies and energy saving strategies: (check all that apply)**

Isolating hot/cold aisles	HAS USED; Would use again
Blanking panels	HAS USED; Would use again
Enclose server racks (e.g., strip curtains)	NEVER USED; Would consider using in the future
Data center infrastructure management (DCIM) software	DON'T KNOW
Raising temperature set points	NEVER USED; Would consider using in the future
Variable speed fan drives	DON'T KNOW
Energy-efficient air handling units	HAS USED; Would use again
Modular facility design for data center expansion	NEVER USED; Would consider using in the future
Air-side economizer	DON'T KNOW
Water-side economizer	DON'T KNOW
Energy-efficiency lighting	HAS USED; Would not use again
Predictive modeling of future IT deployments	DON'T KNOW

---

**Q30: What is the typical facility temperature?** 72

**PAGE 10: Servers**

**Q31: Regarding Servers; Has your company considered or used any of the following technologies and energy saving strategies: (check all that apply)**

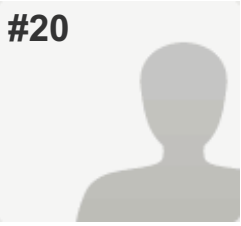
Energy efficient server hardware (e.g., power supply, fans, etc.)	HAS USED;Would use again
Underclocking	DON'T KNOW
Virtualization	HAS USED;Would use again
Decomission idle servers	HAS USED;Would use again
Consolidate lightly used servers	DON'T KNOW
Improve data storage efficiently	HAS USED;Would use again
IT power management software	HAS USED;Would use again

**PAGE 11: [Multi-tenant DCs] Adjust pricing models to incentivize energy efficiency**

**Q32: Regarding [Multi-tenant data centers] Adjust pricing models to incentivize energy efficiency; Has your company considered or used any of the following technologies and energy saving strategies: (check all that apply)**

Space-based pricing	NEVER USED;Would consider using in the future
Space and power block pricing (differentiate power and energy)	DON'T KNOW
Space and actual power pricing (differentiate power and energy)	DON'T KNOW

#20



**COMPLETE**

**Collector:** Web Link 3 (Web Link)  
**Started:** Friday, May 29, 2015 3:09:40 PM  
**Last Modified:** Friday, May 29, 2015 3:19:41 PM  
**Time Spent:** 00:10:00  
**IP Address:** 129.83.31.1

PAGE 1: Welcome

**Q1: Name**

First name, last name initial

Henry

PAGE 2: Which of the following do you do in your position?

**Q2: Do you participate in decisions about purchasing equipment for your data center (e.g., servers, software, racks, lighting, cooling equipment)?** Yes

**Q3: Do you participate in decisions about servicing or maintaining equipment for your data center?** Yes

**Q4: How many data centers, server rooms, and server closets does your company own or operate?** 2

**Q5: [If more than one data center] For how many data centers are you involved in major equipment purchase and maintenance decisions?** 2

PAGE 3

**Q6: The majority of the data centers you help manage are:** Enterprise data centers (> 5,000 square feet)

**Q7: What is the average number of racks in your typical data center?** <2,000 (please enter the value below) 100

**Q8: How many servers are there in your organization as a whole?** < 2,000

PAGE 4



Questionnaire for focus group participants at AFCOM Symposium Boston event on June 2nd

<b>Q9: What type of data centers does your company operate?</b>	Enterprise/corporate data centers, High-performance/scientific computing
<b>Q10: Which sectors does your data center support? (Name no more than three)</b>	IT services
<b>Q11: What state(s) are your data centers located in?</b>	MA

PAGE 5

<b>Q12: When did you last pursue a major equipment purchase/upgrade for your data center?</b>	Within the last 3 years
<b>Q13: How often do you replace servers in your data centers?</b>	4 years
<b>Q14: How often do you make major infrastructure upgrades to your data centers?</b>	5 years
<b>Q15: Do you actively participate in the EnergySTAR Buildings, Green Grid, or another third-party energy-efficiency program?</b>	Yes
<b>Q16: Have you had an energy audit performed by a third party within the last three years?</b>	No

PAGE 6

<b>Q17: Do you track energy use on a regular basis?</b>	Yes
<b>Q18: If YES, what is the typical electricity consumption (kwh) of one of your data centers?</b>	2.1million kWh / year
<b>Q19: Do you track power usage effectiveness (PUE) or any other efficiency measures?</b>	Yes
<b>Q20: If YES, what is the average PUE of your data centers?</b>	1.3
<b>Q21: Do you track server utilization?</b>	Yes
<b>Q22: If YES, what is the average server utilization rate of your data centers?</b>	don't know

PAGE 7

<b>Q23: Do you rent data center space from another company?</b>	No
<b>Q24: If YES, what percentage of your data center needs are met by renting space from others?</b>	<i>Respondent skipped this question</i>
<b>Q25: Do you lease or outsource from another company any of the following elements of your data centers?</b>	
Servers	No
Facility management	No
Maintenance & repairs	No

PAGE 8

<b>Q26: Do you lease space in your data center(s) to other companies?</b>	No
<b>Q27: If YES, what percentage of your racks are leased to other companies?</b>	<i>Respondent skipped this question</i>
<b>Q28: If you lease data center space to or from another company, does the tenant or facility owner typically pay for electricity costs?</b>	<i>Respondent skipped this question</i>

PAGE 9: Facility Management

**Q29: Regarding Facility Management; has your company considered or used any of the following technologies and energy saving strategies: (check all that apply)**

Isolating hot/cold aisles	HAS USED; Would use again
Blanking panels	HAS USED; Would use again
Data center infrastructure management (DCIM) software	HAS USED; Would use again
Raising temperature set points	HAS USED; Would use again
Variable speed fan drives	NEVER USED; Would consider using in the future
Energy-efficient air handling units	NEVER USED; Would consider using in the future
Modular facility design for data center expansion	HAS USED; Would use again
Air-side economizer	NEVER USED; Would consider using in the future
Water-side economizer	HAS USED; Would use again
Energy-efficiency lighting	HAS USED; Would use again
Predictive modeling of future IT deployments	NEVER USED; Would consider using in the future
Other (please specify)	High density zone with active rear door refrigerant heat extractors

---

**Q30: What is the typical facility temperature?** 71

**Q31: Regarding Servers; Has your company considered or used any of the following technologies and energy saving strategies: (check all that apply)**

Energy efficient server hardware (e.g., power supply, fans, etc.)	HAS USED;Would use again
Underclocking	NEVER USED;Would consider using in the future
Virtualization	HAS USED;Would use again
Decomission idle servers	HAS USED;Would use again
Consolidate lightly used servers	HAS USED;Would use again
Improve data storage efficiently	HAS USED;Would use again
IT power management software	NEVER USED;Would consider using in the future

**PAGE 11: [Multi-tenant DCs] Adjust pricing models to incentivize energy efficiency**

**Q32: Regarding [Multi-tenant data centers] Adjust pricing models to incentivize energy efficiency; Has your company considered or used any of the following technologies and energy saving strategies: (check all that apply)**

*Respondent skipped this question*