

LA			
Time (min)	pH	h[MVC]/h[MVC]	Time (min)
0	6.5	0	0
5	6.5	-0.1945	1
10	6.5	-0.3990	2
15	6.5	-0.5985	3
20	6.5	-0.7980	4
25	6.5	-0.9975	5
30	6.5	-1.1970	6
35	6.5	-1.3965	7
40	6.5	-1.5960	8
45	6.5	-1.7955	9
50	6.5	-1.9950	10
55	6.5	-2.1945	11
60	6.5	-2.3940	12
65	6.5	-2.5935	13
70	6.5	-2.7930	14
75	6.5	-2.9925	15
80	6.5	-3.1920	16
85	6.5	-3.3915	17
90	6.5	-3.5910	18
95	6.5	-3.7905	19
100	6.5	-3.9900	20
105	6.5	-4.1895	21
110	6.5	-4.3890	22
115	6.5	-4.5885	23
120	6.5	-4.7880	24
125	6.5	-4.9875	25
130	6.5	-5.1870	26
135	6.5	-5.3865	27
140	6.5	-5.5860	28
145	6.5	-5.7855	29
150	6.5	-5.9850	30
155	6.5	-6.1845	31
160	6.5	-6.3840	32
165	6.5	-6.5835	33
170	6.5	-6.7830	34
175	6.5	-6.9825	35
180	6.5	-7.1820	36
185	6.5	-7.3815	37
190	6.5	-7.5810	38
195	6.5	-7.7805	39
200	6.5	-7.9800	40
205	6.5	-8.1795	41
210	6.5	-8.3790	42
215	6.5	-8.5785	43
220	6.5	-8.7780	44
225	6.5	-8.9775	45
230	6.5	-9.1770	46
235	6.5	-9.3765	47
240	6.5	-9.5760	48
245	6.5	-9.7755	49
250	6.5	-9.9750	50
255	6.5	-10.1745	51
260	6.5	-10.3740	52
265	6.5	-10.5735	53
270	6.5	-10.7730	54
275	6.5	-10.9725	55
280	6.5	-11.1720	56
285	6.5	-11.3715	57
290	6.5	-11.5710	58
295	6.5	-11.7705	59
300	6.5	-11.9700	60

SUMMARY OUTPUT 6.5

Regression Statistics
Multiple R 0.99183
R Square 0.98362
Adjusted R Square 0.98328
Standard Error 0.23645
Observations 32

ANOVA
df SS MS F Significance F
Regression 1 6.96582 6.96582 112.1224 4.88E-07
Residual 30 0.08418 0.00281
Total 31 0.38400

Coefficients: Intercept 0, Slope 0.03725

SUMMARY OUTPUT 7.5

Regression Statistics
Multiple R 0.95412
R Square 0.91004
Adjusted R Square 0.90284
Standard Error 0.28822
Observations 32

ANOVA
df SS MS F Significance F
Regression 1 6.96582 6.96582 112.1224 4.88E-07
Residual 30 0.08418 0.00281
Total 31 0.38400

Coefficients: Intercept 0, Slope 0.03725

SUMMARY OUTPUT 8.5

Regression Statistics
Multiple R 0.91746
R Square 0.84230
Adjusted R Square 0.83679
Standard Error 0.37769
Observations 32

ANOVA
df SS MS F Significance F
Regression 1 6.96582 6.96582 112.1224 4.88E-07
Residual 30 0.08418 0.00281
Total 31 0.38400

Coefficients: Intercept 0, Slope 0.03725

LF			
Time (min)	pH	h[MVC]/h[MVC]	Time (min)
0	6.5	-0.0851	0.5
1	6.5	-0.1702	1
2	6.5	-0.2553	2
3	6.5	-0.3404	3
4	6.5	-0.4255	4
5	6.5	-0.5106	5
6	6.5	-0.5957	6
7	6.5	-0.6808	7
8	6.5	-0.7659	8
9	6.5	-0.8510	9
10	6.5	-0.9361	10
11	6.5	-1.0212	11
12	6.5	-1.1063	12
13	6.5	-1.1914	13
14	6.5	-1.2765	14
15	6.5	-1.3616	15
16	6.5	-1.4467	16
17	6.5	-1.5318	17
18	6.5	-1.6169	18
19	6.5	-1.7020	19
20	6.5	-1.7871	20
21	6.5	-1.8722	21
22	6.5	-1.9573	22
23	6.5	-2.0424	23
24	6.5	-2.1275	24
25	6.5	-2.2126	25
26	6.5	-2.2977	26
27	6.5	-2.3828	27
28	6.5	-2.4679	28
29	6.5	-2.5530	29
30	6.5	-2.6381	30
31	6.5	-2.7232	31
32	6.5	-2.8083	32
33	6.5	-2.8934	33
34	6.5	-2.9785	34
35	6.5	-3.0636	35
36	6.5	-3.1487	36
37	6.5	-3.2338	37
38	6.5	-3.3189	38
39	6.5	-3.4040	39
40	6.5	-3.4891	40
41	6.5	-3.5742	41
42	6.5	-3.6593	42
43	6.5	-3.7444	43
44	6.5	-3.8295	44
45	6.5	-3.9146	45
46	6.5	-3.9997	46
47	6.5	-4.0848	47
48	6.5	-4.1699	48
49	6.5	-4.2550	49
50	6.5	-4.3401	50
51	6.5	-4.4252	51
52	6.5	-4.5103	52
53	6.5	-4.5954	53
54	6.5	-4.6805	54
55	6.5	-4.7656	55
56	6.5	-4.8507	56
57	6.5	-4.9358	57
58	6.5	-5.0209	58
59	6.5	-5.1060	59
60	6.5	-5.1911	60

SUMMARY 6.5

Regression Statistics
Multiple R 0.98812
R Square 0.98612
Adjusted R Square 0.98572
Standard Error 0.27469
Observations 32

ANOVA
df SS MS F Significance F
Regression 1 6.96582 6.96582 112.1224 4.88E-07
Residual 30 0.08418 0.00281
Total 31 0.38400

Coefficients: Intercept 0, Slope 0.03725

SUMMARY 7.5

Regression Statistics
Multiple R 0.95412
R Square 0.91004
Adjusted R Square 0.90284
Standard Error 0.28822
Observations 32

ANOVA
df SS MS F Significance F
Regression 1 6.96582 6.96582 112.1224 4.88E-07
Residual 30 0.08418 0.00281
Total 31 0.38400

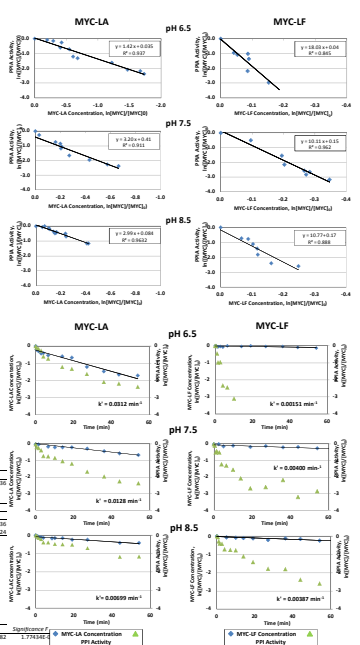
Coefficients: Intercept 0, Slope 0.03725

SUMMARY 8.5

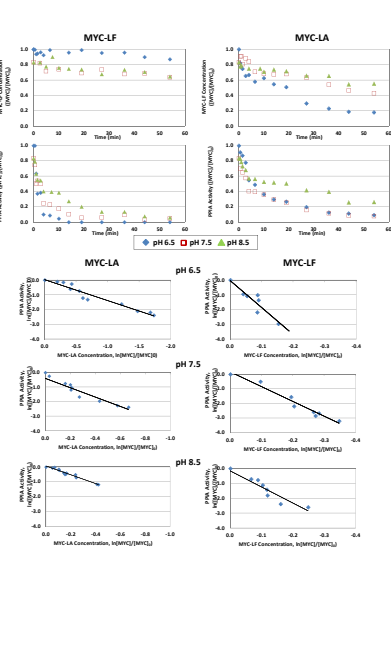
Regression Statistics
Multiple R 0.91746
R Square 0.84230
Adjusted R Square 0.83679
Standard Error 0.37769
Observations 32

ANOVA
df SS MS F Significance F
Regression 1 6.96582 6.96582 112.1224 4.88E-07
Residual 30 0.08418 0.00281
Total 31 0.38400

Coefficients: Intercept 0, Slope 0.03725



LF				LA				
Time	pH	h[MVC]/h[MVC]	Time	pH	h[MVC]/h[MVC]	Time	pH	
0	6.5	1.00	0	6.5	1.00	0	6.5	1.00
1	6.5	0.97	1	6.5	1.00	1	6.5	1.00
2	6.5	0.94	2	6.5	1.00	2	6.5	1.00
3	6.5	0.91	3	6.5	1.00	3	6.5	1.00
4	6.5	0.88	4	6.5	1.00	4	6.5	1.00
5	6.5	0.85	5	6.5	1.00	5	6.5	1.00
6	6.5	0.82	6	6.5	1.00	6	6.5	1.00
7	6.5	0.79	7	6.5	1.00	7	6.5	1.00
8	6.5	0.76	8	6.5	1.00	8	6.5	1.00
9	6.5	0.73	9	6.5	1.00	9	6.5	1.00
10	6.5	0.70	10	6.5	1.00	10	6.5	1.00
11	6.5	0.67	11	6.5	1.00	11	6.5	1.00
12	6.5	0.64	12	6.5	1.00	12	6.5	1.00
13	6.5	0.61	13	6.5	1.00	13	6.5	1.00
14	6.5	0.58	14	6.5	1.00	14	6.5	1.00
15	6.5	0.55	15	6.5	1.00	15	6.5	1.00
16	6.5	0.52	16	6.5	1.00	16	6.5	1.00
17	6.5	0.49	17	6.5	1.00	17	6.5	1.00
18	6.5	0.46	18	6.5	1.00	18	6.5	1.00
19	6.5	0.43	19	6.5	1.00	19	6.5	1.00
20	6.5	0.40	20	6.5	1.00	20	6.5	1.00
21	6.5	0.37	21	6.5	1.00	21	6.5	1.00
22	6.5	0.34	22	6.5	1.00	22	6.5	1.00
23	6.5	0.31	23	6.5	1.00	23	6.5	1.00
24	6.5	0.28	24	6.5	1.00	24	6.5	1.00
25	6.5	0.25	25	6.5	1.00	25	6.5	1.00
26	6.5	0.22	26	6.5	1.00	26	6.5	1.00
27	6.5	0.19	27	6.5	1.00	27	6.5	1.00
28	6.5	0.16	28	6.5	1.00	28	6.5	1.00
29	6.5	0.13	29	6.5	1.00	29	6.5	1.00
30	6.5	0.10	30	6.5	1.00	30	6.5	1.00
31	6.5	0.07	31	6.5	1.00	31	6.5	1.00
32	6.5	0.04	32	6.5	1.00	32	6.5	1.00
33	6.5	0.01	33	6.5	1.00	33	6.5	1.00
34	6.5	-0.02	34	6.5	1.00	34	6.5	1.00
35	6.5	-0.05	35	6.5	1.00	35	6.5	1.00
36	6.5	-0.08	36	6.5	1.00	36	6.5	1.00
37	6.5	-0.11	37	6.5	1.00	37	6.5	1.00
38	6.5	-0.14	38	6.5	1.00	38	6.5	1.00
39	6.5	-0.17	39	6.5	1.00	39	6.5	1.00
40	6.5	-0.20	40	6.5	1.00	40	6.5	1.00
41	6.5	-0.23	41	6.5	1.00	41	6.5	1.00
42	6.5	-0.26	42	6.5	1.00	42	6.5	1.00
43	6.5	-0.29	43	6.5	1.00	43	6.5	1.00
44	6.5	-0.32	44	6.5	1.00	44	6.5	1.00
45	6.5	-0.35	45	6.5	1.00	45	6.5	1.00
46	6.5	-0.38	46	6.5	1.00	46	6.5	1.00
47	6.5	-0.41	47	6.5	1.00	47	6.5	1.00
48	6.5	-0.44	48	6.5	1.00	48	6.5	1.00
49	6.5	-0.47	49	6.5	1.00	49	6.5	1.00
50	6.5	-0.50	50	6.5	1.00	50	6.5	1.00
51	6.5	-0.53	51	6.5	1.00	51	6.5	1.00
52	6.5	-0.56	52	6.5	1.00	52	6.5	1.00
53	6.5	-0.59	53	6.5	1.00	53	6.5	1.00
54	6.5	-0.62	54	6.5	1.00	54	6.5	1.00
55	6.5	-0.65	55	6.5	1.00	55	6.5	1.00
56	6.5	-0.68	56	6.5	1.00	56	6.5	1.00
57	6.5	-0.71	57	6.5	1.00	57	6.5	1.00
58	6.5	-0.74	58	6.5	1.00	58	6.5	1.00
59	6.5	-0.77	59	6.5	1.00	59	6.5	1.00
60	6.5	-0.80	60	6.5	1.00	60	6.5	1.00



LA

Summary Statistics for LA at various pH levels:

- pH 6.5: Multiple R 0.99183, R Square 0.98362, Adjusted R Square 0.98328, Standard Error 0.23645, Observations 32
- pH 7.5: Multiple R 0.95412, R Square 0.91004, Adjusted R Square 0.90284, Standard Error 0.28822, Observations 32
- pH 8.5: Multiple R 0.91746, R Square 0.84230, Adjusted R Square 0.83679, Standard Error 0.37769, Observations 32

LF

Summary Statistics for LF at various pH levels:

- pH 6.5: Multiple R 0.98812, R Square 0.98612, Adjusted R Square 0.98572, Standard Error 0.27469, Observations 32
- pH 7.5: Multiple R 0.95412, R Square 0.91004, Adjusted R Square 0.90284, Standard Error 0.28822, Observations 32
- pH 8.5: Multiple R 0.91746, R Square 0.84230, Adjusted R Square 0.83679, Standard Error 0.37769, Observations 32